

IT'S IN OUR NATURE
NIBE.EU

Ground source heat pumps from NIBE

 **NIBE**





*Nature can be warm and loving,
as well as cold and fierce.
She is our greatest source of
energy, and we depend on
her to bring life into everything
around us.*

Being born in the harsh environments of the Nordics means we are not only used to strong climate contrasts, we have to thrive no matter the circumstances.

Whether it's a freezing winter or a hot summer afternoon, the need for a balanced indoor climate have always been an essential part of our everyday life.

Our products provide cooling, heating, ventilation and hot water to your home, enabling you to regulate your energy consumption, creating the perfect indoor climate. And by using local natural power, together we can build a more sustainable future.



Indoor comfort is in our nature

Nature inspire us to create the perfect climate conditions for our everyday lives. Welcome to our world of indoor comfort.



Ground source heat pumps from NIBE

Indoor comfort is in our nature

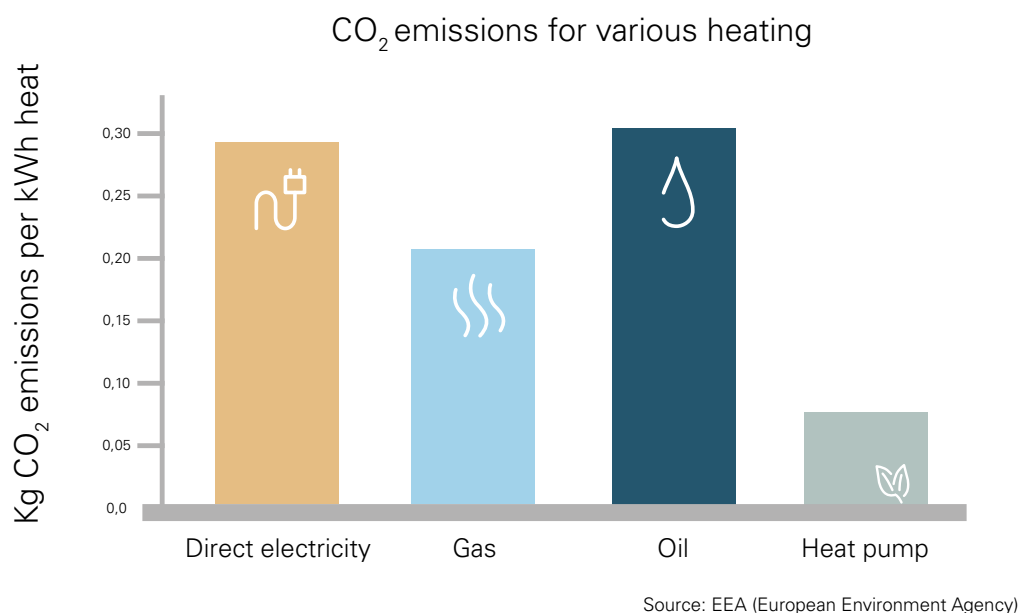


New times call for a new approach

The topic of climate issues has never been more discussed than today. Taking action and actually changing the way we interact with our planet's resources has become a necessity that none of us can afford to ignore.

A majority of the harmful emissions from an average home is caused by its heating and hot water systems. Oil, coal and gas needs to be replaced by energy sources that don't cause irreversible damage to our nature.

With over 50 years of manufacturing climate solutions, we invite you to take part in building a more sustainable future. We stay true to our legacy by harvesting natural energy, and by combining it with new smart technology we can offer even more efficient solutions that benefit everyone. Our wide range of products provides not only cooling, heating, ventilation and hot water to your home – it also does so with minimal impact on nature.



Start with a heat pump from NIBE

When making the switch from fossil fuels to renewable energy, you will experience benefits across the board. Not only will you do the environment a favour, you will save money by doing so.

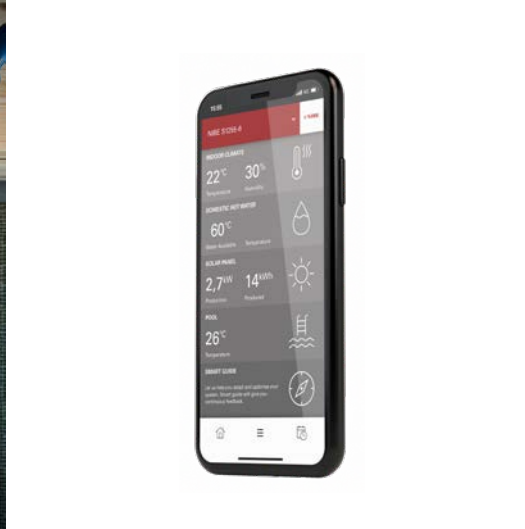
With a heat pump from NIBE, you can create a perfect indoor climate by using renewable energy from your local surroundings. It immediately starts to deliver an environmental payback in the form of reduced energy consumption and emissions.

Since electricity is not the main energy source for the heat pump, the amount of electricity required is relatively low. It is only needed to drive the pump and enable the heat extraction process, allowing you to save up to 75% of your energy costs. With energy prices continually rising, you're unlikely to regret your decision. In fact, you'll start enjoying savings from the first month.



The NIBE S Series

- Timeless, elegant design
- Integrated wifi connection
- Touchscreen with swipe function



- Weather control
- Wireless software updates
- A part of the smart home
- Support for Google home*



*Not available in all countries

Welcome to NIBE's smart future!

The world is changing. Continuing technological development means a better future for everyone. NIBE is now taking the next step towards the future of heat pump technology with the launch of the NIBE S Series.

In today's smart homes, everyday technology is no longer sufficient. Devices that were previously incompatible online are now part of an intelligent network, designed to be smart and efficient.

A new digital platform is being launched, making life easier for both installers and end consumers. It will help to reduce costs whilst creating a perfect indoor climate, suited to everyday life. We will be a natural part of the connected home, giving our consumers greater opportunities to save energy for a greener, healthier world.

This is a technological advancement that will provide opportunities we cannot yet understand. At the same time we're future-proofing our products for the smart home.

NIBE works in-house with its own innovators and developers. The team has worked hard on the technological development – with many advantages for our end users as a result.

The heat pumps have a new design with a touchscreen and a new interface. The design is stylish and has a Scandinavian presence throughout.

In a smart home, wifi is standard. Naturally, this also applies to our new heat pumps, which no longer need to be connected via a cable.

With continuous technological advancement, we don't know exactly what we will be connecting to our heat pumps in 10 years' time. But whatever it is, we must ensure we have the product capability. One of the major advances we can see today is the improved efficiency of communication between the user and installer. It's also becoming easier, faster and more reliable for installers to troubleshoot remotely. It's now easy to diagnose disruptions without needing to be near the heat pumps.

Today's heat pumps are constantly becoming easier to connect to. In the future, it will be possible to combine existing and new energy sources, creating different system solutions.

To maintain our position at the leading edge of heat pump technology, we are continuing to develop smarter solutions that can be connected, identify needs and create opportunities in the right place at the right time. And in everything we do, we prove that the future is in our nature.

The new NIBE S Series



The new NIBE S Series

It's easy to be smart

*The demands of everyday life are constantly growing.
We're about to make it easier for you.*

The new S Series from NIBE features an elegant new look with a push-to-open aluminium door. A touchscreen control lets you swipe through the updated interface. With integrated wireless connectivity, you can connect your unit anywhere, anytime. It also has support for Google Home, making it a natural part of your connected home.

The connected online system makes sure everything runs smoothly. By adjusting the temperature to your daily patterns, you get maximum comfort and minimum energy consumption. Both cheaper and greener. All you have to do is sit back and relax.

We make it easy to be smart.



The new NIBE S Series

Always updated

The new NIBE S Series is a step into the future of digitalisation.

As technology develops, there are new opportunities to connect and optimise our daily lives. NIBE is now taking a great step in making heat pumps the heart of the smart home.

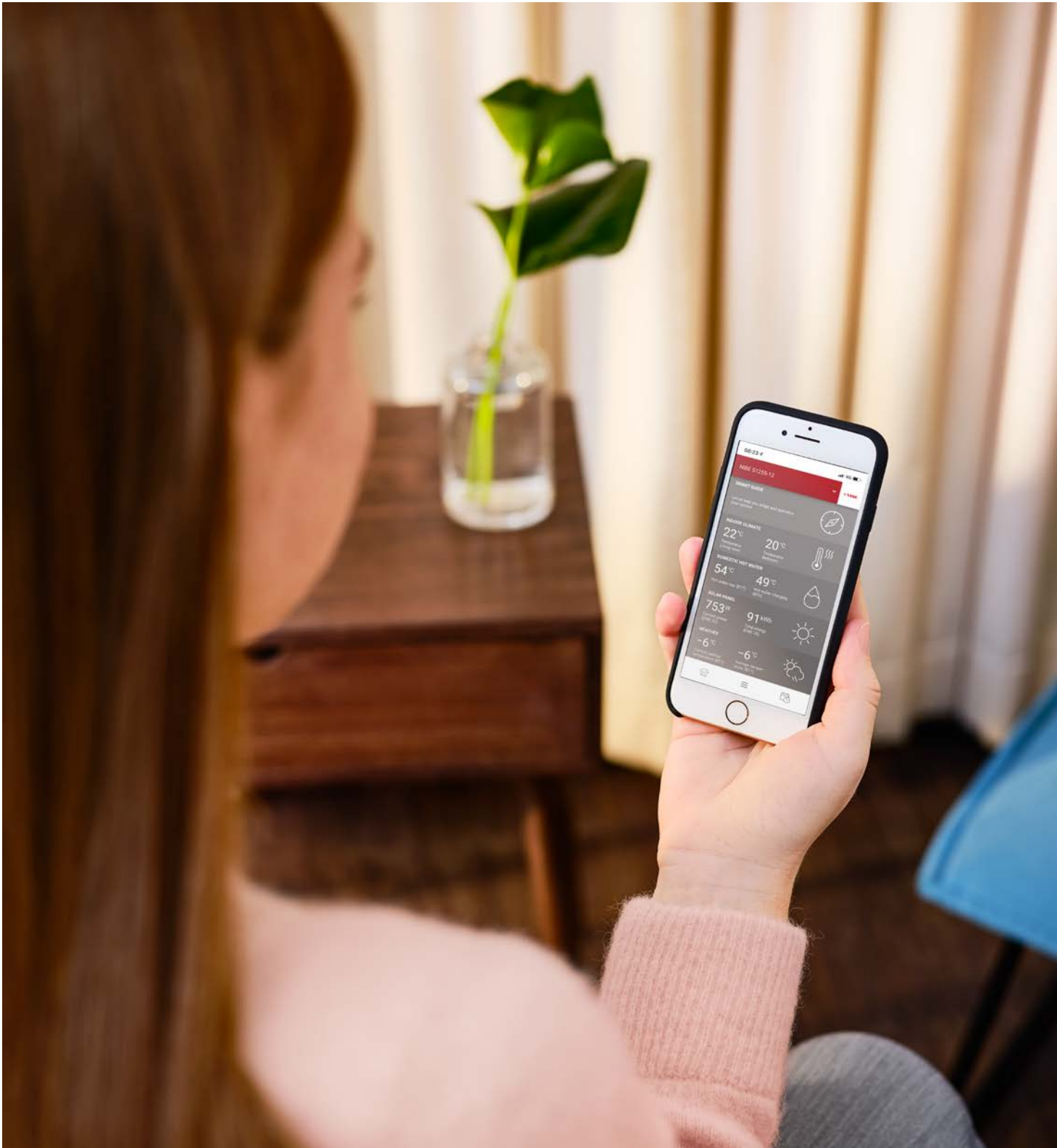
With an integrated wifi connection and the new myUplink app, you can control your indoor climate in a way suited to you.

NIBE are constantly working to develop the software in your heat pump. When it's time to update your software, our new technology platform enables us to send an update directly to your NIBE heat pump. All you need to do is authorise the update on your heat pump's touchscreen. The latest software is always available at the touch of a button. This helps to optimise operations and maximise energy savings.

The new NIBE S Series easily becomes a natural part of your smart home, both now and in the future.



The new NIBE S Series



Ground source heat pumps

By harvesting energy from natural surroundings, you can create the perfect indoor climate in your home with minimal impact on the environment.

Ground source heat is pure solar energy stored in the ground and the bottom of lakes. With a NIBE ground source heat pump, you can create the perfect indoor climate and provide your home with both heat and hot water, as well as cooling during hot summer days. When you chose renewable energy, you will reduce your energy costs and do the environment a favor.

The ground source heat pump gathers heat from the solar energy stored in the ground, either by using collectors buried at a shallow depth, or from boreholes which are drilled deeper underground. By using a mixture of water and an environmentally friendly anti-freeze solution that circulates through a closed loop, thermal energy is absorbed from the ground and transferred to the heat pump.

SIMPLE REPLACEMENT

Choose from NIBE's speed controlled ground source heat pumps, NIBE S1155, NIBE S1255, NIBE F1155, NIBE F1255 or NIBE F1355 for smooth replacement of your heat pump.

If your old heat pump needs replacing, your may need to supplement your collector system. There are many reasons for this, the most important being the significantly lower efficiency level of older heat pumps, and thereby, shallower boreholes. The combination of speed control of NIBE S1155/S1255 and NIBE F1155/F1255/F1355 and the brine control function allow the heat pump to adjust itself to maximise the capacity of the existing collector system, neither too much nor too little.

PRODUCTS

The new S Series*

NIBE S1255

NIBE S1255 PC

NIBE S1155

NIBE S1155 PC

The F Series

NIBE F1255

NIBE F1255 PC

NIBE F1155

NIBE F1155 PC

NIBE F1245

NIBE F1245 PC

NIBE F1145

NIBE F1145 PC

NIBE F1226

NIBE F1126

NIBE F1355

NIBE F1345

*The new NIBE S Series is not available in all countries.
Contact your local dealer for more information.

Ground source heat pumps from NIBE

The new NIBE S Series | Ground source heat pumps

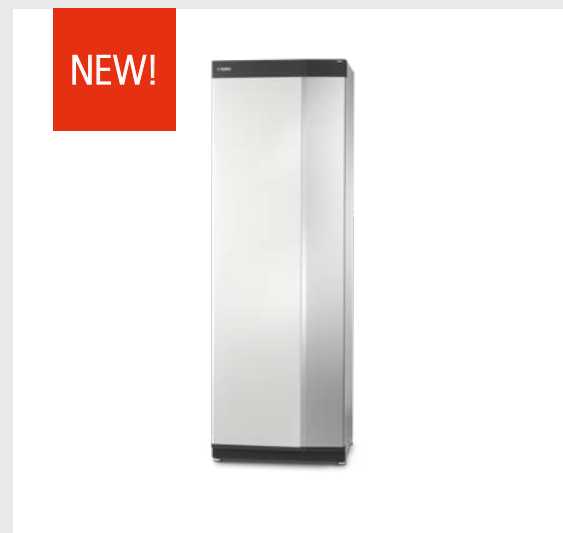
NIBE S1255

NIBE S1255 is an intelligent, inverter-controlled ground source heat pump with integrated water heater. NIBE S1255 provides optimum savings since the heat pump always performs efficiently and automatically adapts to your home's heating demand all year round. NIBE is a leading player in the field of inverter technology, with many years' experience of variable output ground source heat pumps and one of the widest product ranges on the market.

NIBE S1255 has a high seasonal performance factor, resulting in minimal operating costs. The heat pump is available in three different output sizes: 1.5–6 kW, 3–12 kW and 4–16 kW, and is suitable for both small and large properties.

With integrated wifi, the S Series is a natural part of your connected home. Smart technology adjusts the indoor climate automatically while you're in complete control from your phone or tablet. Giving maximum comfort and minimum energy consumption, while doing nature a favour at the same time.

- Three output sizes and leading inverter technology for optimum customization.
- Optimal seasonal performance factor and minimal operating costs.
- User-friendly touch control and integrated wireless connectivity with energy saving smart technology for maximum comfort.



The system's efficiency class for heating.



The product's efficiency class and tap profile for hot water.

NIBE S1255		1.5–6 kW	3–12 kW	4–16 kW
Space heating efficiency class 35°C / 55°C ¹⁾		A+++/A+++		
Space heating efficiency class of the system 35°C / 55°C ²⁾		A+++/A+++		
Efficiency class hot water / charging profile ³⁾		A / XL		
Nominal heating output (P _{designh})	kW	6	12	16
SCOP _{EN14825} cold climate, 35°C / 55°C		5.5 / 4.1	5.4 / 4.3	5.5 / 4.2
SCOP _{EN14825} average climate, 35°C / 55°C		5.2 / 4.0	5.2 / 4.1	5.2 / 4.1
Output data according to EN 14511 nominal 0/35 – Rated output	kW	3.15	5.06	8.89
Output data according to EN 14511 nominal 0/35 – COP _{EN14511}		4.72	4.87	4.85
Sound power level (L _{WA}) according to EN 12102 at 0/35	dB(A)	36 – 43	36 – 47	36 – 47
Rated voltage		400V 3N ~ 50 Hz		
Refrigerant amount in CO ₂ -equivalent	ton	2.06	3.55	3.90
Height / Width / Depth	mm	1800 / 600 / 620		
Intergrated hot water heater	l	180		
Weight complete heat pump	kg	220	250	255

¹⁾ Scale for the product's efficiency class room heating: A+++ – D. ²⁾ Scale for the system's efficiency class room heating: A+++ – G. Reported efficiency for the system takes the product's temperature regulator into account. ³⁾ Scale for efficiency class hot water: A+ – F.

Ground source heat pumps from NIBE

The new NIBE S Series | Ground source heat pumps

NIBE S1255 PC NIBE S1255 PC is an intelligent, inverter-controlled ground source heat pump with integrated passive cooling and an integrated hot water tank.

NIBE S1255 PC provides optimum savings since the heat pump always performs efficiently and automatically adapts to your home's heating demand all year round. NIBE is a leading player in the field of inverter technology, with many years experience of variable output ground source heat pumps and one of the widest product ranges on the market. NIBE S1255 PC has a high seasonal performance factor, resulting in minimal operating costs. The heat pump is available in the output size: 1.5–6 kW.

With integrated wifi, the S Series is a natural part of your connected home. Smart technology adjusts the indoor climate automatically while you're in complete control from your phone or tablet. Giving maximum comfort and minimum energy consumption, while doing nature a favour at the same time.

- Heat pump with integrated hot water tank and cooling.
- High seasonal performance factor and minimal operating costs with leading inverter technology that adjust operation according to requirements.
- User-friendly touch control and integrated wireless connectivity with energy saving smart technology for maximum comfort.



A+++
The system's efficiency class for heating.

A **XL**
The product's efficiency class and tap profile for hot water.

NIBE S1255 PC		1.5–6 kW
Space heating efficiency class 35°C / 55°C ¹⁾		A+++ / A+++
Space heating efficiency class of the system 35°C / 55°C ²⁾		A+++/A+++
Efficiency class hot water / charging profile ³⁾		A / XL
Nominal heating output (P _{designH})	kW	6
SCOP _{EN14825} cold climate, 35°C / 55°C		5.5 / 4.1
SCOP _{EN14825} average climate, 35°C / 55°C		5.2 / 4.0
Output data according to EN 14511 nominal 0/35 – Rated output	kW	3.15
Output data according to EN 14511 nominal 0/35 – COP _{EN14511}		4.72
Sound power level (L _{WA}) according to EN 12102 at 0/35	dB(A)	36 – 43
Rated voltage		400V 3N ~ 50 Hz
Refrigerant amount in CO ₂ -equivalent	ton	2.06
Height / Width / Depth	mm	1800 / 600 / 620
Intergrated hot water heater	l	180
Weight complete heat pump	kg	240

¹⁾ Scale for the product's efficiency class room heating: A+++ – D. ²⁾ Scale for the system's efficiency class room heating: A+++ – G. Reported efficiency for the system takes the product's temperature regulator into account. ³⁾ Scale for efficiency class hot water: A+ – F.

Ground source heat pumps from NIBE

The new NIBE S Series | Ground source heat pumps

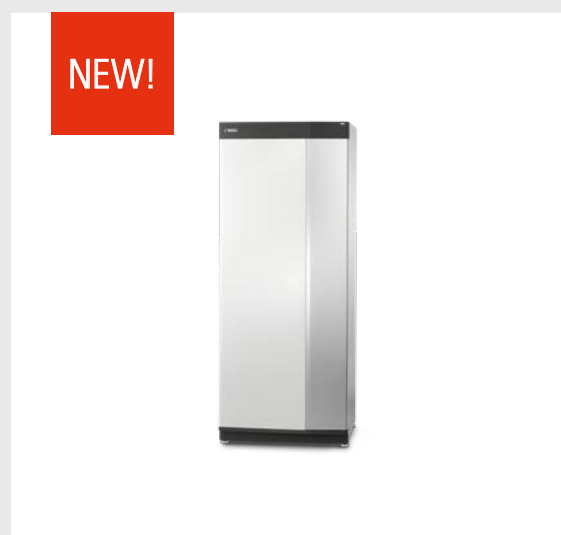
NIBE S1155

NIBE S1155 is an intelligent, inverter-controlled ground source heat pump without integrated hot water tank, which makes it easy to install in locations with low ceilings. A separate hot water tank is selected according to hot water requirements. NIBE S1155 provides optimum savings since the heat pump automatically adapts to your home's heating demand. NIBE is a leading player in the field of inverter technology, with many years' experience of output-regulating ground source heat pumps and one of the widest product ranges on the market.

NIBE S1155 has a high seasonal performance factor, resulting in minimal operating costs. The heat pump is available in three different output sizes: 1.5–6 kW, 3–12 kW and 4–16 kW, and is suitable for both small and large properties.

With integrated wifi, the S Series is a natural part of your connected home. Smart technology adjusts the indoor climate automatically while you're in complete control from phone or tablet. Giving maximum comfort and minimum energy consumption, while doing nature a favour at the same time.

- Leading inverter technology and separate hot water tank for optimum customization.
- Three output sizes for optimal seasonal performance factor and minimal operating costs.
- User-friendly touch control and integrated wireless connectivity with energy saving smart technology for maximum comfort.



The system's efficiency class for heating.



The product's efficiency class and tap profile for hot water together with VPB S300 (applies to S1155-12 and -16).

NIBE S1155		1.5–6 kW	3–12 kW	4–16 kW	6–25 kW
Space heating efficiency class 35°C / 55°C ¹⁾		A+++ / A+++			
Space heating efficiency class of the system 35°C / 55°C ²⁾		A+++ / A+++			
Efficiency class hot water / charging profile with VPB S300 ³⁾		A / XL	A / XXL		
Nominal heating output (P _{designh})	kW	6	12	16	25
SCOP _{EN14825} cold climate, 35°C / 55°C		5.5 / 4.1	5.4 / 4.3	5.5 / 4.2	5.5 / 4.1
SCOP _{EN14825} average climate, 35°C / 55°C		5.2 / 4.0	5.2 / 4.1	5.2 / 4.1	5.2 / 4.0
Output data according to EN 14511 nominal 0/35 – Rated output	kW	3.15	5.06	8.89	12.68
Output data according to EN 14511 nominal 0/35 – COP _{EN14511}		4.72	4.87	4.85	4.68
Sound power level (L _{WA}) ⁴⁾ according to EN 12102 at 0/35	dB(A)	36–43	36–47		
Rated voltage		400V 3N ~ 50Hz			
Refrigerant amount in CO ₂ -equivalent	ton	2.06	3.55	3.90	4.39
Height / Width / Depth		1500 / 600 / 620			
Weight complete heat pump	kg	139	167	172	205

¹⁾ Scale for the product's efficiency class room heating: A+++ – D. ²⁾ Scale for the system's efficiency class room heating: A+++ – G. Reported efficiency for the system takes the product's temperature regulator into account. ³⁾ Scale for efficiency class hot water: A+ – F.

Ground source heat pumps from NIBE

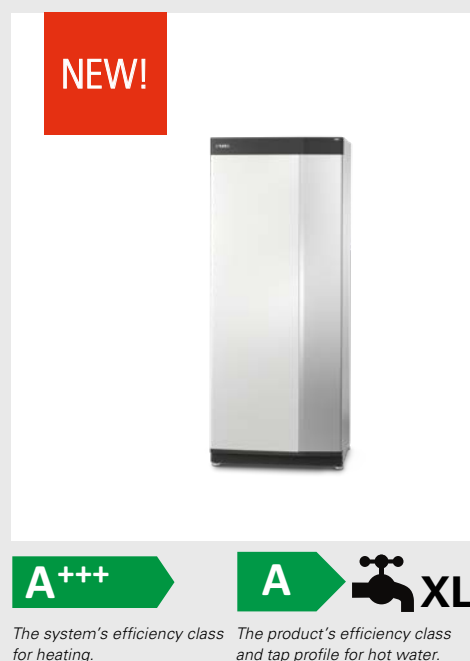
The new NIBE S Series | Ground source heat pumps

NIBE S1155 PC The NIBE S1155 PC is an intelligent, inverter-controlled ground source heat pump with integrated passive cooling. The heat pump is easy to install even in locations with low ceilings, since the hot water tank is separate and is chosen according to hot water requirements. The NIBE S1155 PC provides optimum savings since the heat pump automatically adapts to your home's heating demand. NIBE is a leading player in the field of inverter technology, with many years' experience of variable output ground source heat pumps and one of the widest product ranges on the market.

The NIBE S1155 PC has a high seasonal performance factor, resulting in minimal operating costs. The heat pump is available in the output size: 1.5–6 kW.

With integrated wifi, the S Series is a natural part of your connected home. Smart technology adjusts the indoor climate automatically while you're in complete control from your phone or tablet. Giving maximum comfort and minimum energy consumption, while doing nature a favour at the same time.

- Leading inverter technology and separate water heater for optimum customization.
- Integrated cooling, high seasonal performance factor and minimal operating costs.
- User-friendly touch control and integrated wireless connectivity with energy saving smart technology for maximum comfort.



NIBE S1155 PC		1.5–6 kW
Space heating efficiency class 35°C / 55°C ¹⁾		A+++ / A+++
Space heating efficiency class of the system 35°C / 55°C ²⁾		A+++/A+++
Efficiency class hot water / charging profile with VPB S300 ³⁾		A / XL
Nominal heating output (P _{designh})	kW	6
SCOP _{EN14825} cold climate, 35°C / 55°C		5.5 / 4.1
SCOP _{EN14825} average climate, 35°C / 55°C		5.2 / 4.0
Output data according to EN 14511 nominal 0/35 – Rated output	kW	3.15
Output data according to EN 14511 nominal 0/35 – COP _{EN14511}		4.72
Sound power level (L _{WA}) ¹⁾ according to EN 12102 at 0/35	dB(A)	36 – 43
Rated voltage		400V 3N ~ 50 Hz
Refrigerant amount in CO ₂ -equivalent	ton	2.06
Height / Width / Depth	mm	1500 / 600 / 620
Weight complete heat pump	kg	155

¹⁾ Scale for the product's efficiency class room heating: A+++ – D. ²⁾ Scale for the system's efficiency class room heating: A+++ – G. Reported efficiency for the system takes the product's temperature regulator into account. ³⁾ Scale for efficiency class hot water: A+ – F.

Ground source heat pumps from NIBE

The new NIBE S Series | Accessories

NIBE FLM S45 Exhaust air module

The NIBE FLM S45 is an exhaust air module with built-in fan, specially designed for combining recycling of mechanical exhaust air with a NIBE ground source heat pump, providing an integrated solution for ventilation, hot water and heating.

The NIBE FLM S45 has a high fan capacity and low noise level. Energy is recovered from the ventilated air; even when the heat pump is not in operation. Energy is stored in the soil or rock collector, putting the exhaust air energy into maximum use.

The NIBE S Series is a natural part of your connected home. Smart technology adjusts the indoor climate automatically while you're in complete control from your phone or tablet. Giving maximum comfort and minimum energy consumption, while doing nature a favour at the same time.

NEW!



- Provides an integrated solution for ventilation, hot water and heating with ground source heat pumps.
- Efficient even when the heat pump is not in operation.
- A part of your energy-saving smart home in combination with a NIBE S series heat pump.

NIBE FLM S45		
Supply voltage		230 V ~ 50 Hz
Driving power fan	W	175
Enclosure class		IP21
Maximum sound power level to ISO 12102	dB(A)	36-46
Ventilation max airflow	m ³ /h	350
Height / Width / Depth	mm	396 / 600 / 556
Weight	kg	35

Ground source heat pumps from NIBE

The new NIBE S Series | Accessories

NIBE ERS S10 Heat recovery ventilation unit

The NIBE ERS S10-400 is a heat recovery ventilation unit with high temperature efficiency up to 90% and low energy consumption. The heat recovery ventilation unit is used in houses with areas up to approx. 300 m².

The NIBE ERS S10-400 is designed for installation with a NIBE ground source heat pump or a NIBE air/water heat pump for a complete heating and ventilation system. The heat recovery ventilation unit is easily controlled by the heat pump.

The NIBE S Series is a natural part of your connected home. Smart technology adjusts the indoor climate automatically while you're in complete control from your phone or tablet. Giving maximum comfort and minimum energy consumption, while doing nature a favour at the same time.

NEW!



A

The product's efficiency class.

- Heat recovery ventilation unit with high temperature efficiency and low energy consumption.
- Together with NIBE S1155/S1255 or NIBE VVM S320, it provides a solution in houses with balanced ventilation.
- In combination with a NIBE S series heat pump or indoor module – a part of your energy-saving smart home.

NIBE ERS S10-400		
Efficiency class ¹⁾		A
Supply voltage		230 V ~ 50 Hz
Fuse	A	10
Driving power fan	W	85 x 2
Enclosure class		IPX1
Filter type, exhaust air filter		G4
Filter type, supply air filter		ePM1-55%
Sound pressure level (L _{PI(A)}) ²⁾	dB(A)	47
Ventilation Ø	mm	160
Condensation water drain		G32
Length, supply cable	m	2.4
Length, control cable	m	2.0
Height / Width / Depth	mm	900/600/635
Weight	kg	40

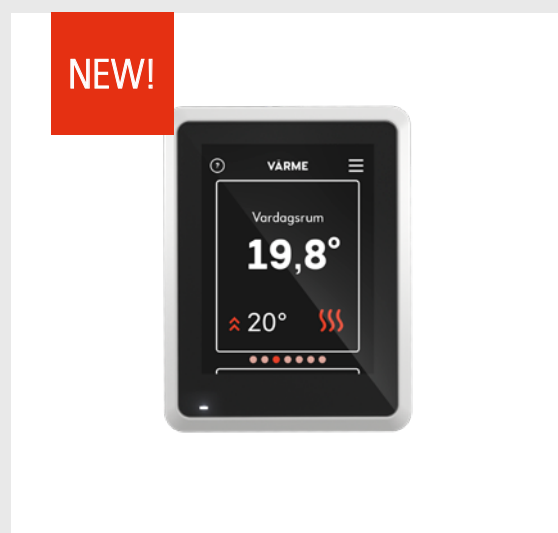
Ground source heat pumps from NIBE

The new NIBE S Series | Accessories

NIBE RMU S40 Room unit

The NIBE RMU S40 is a room unit with a 2.8" touch-screen and built-in temperature and humidity sensors. It is used to control and monitor your NIBE Series heat pump/indoor module from another location in the property other than where the heat pump is installed.

The NIBE S Series is a natural part of your connected home. The smart technology adjusts the indoor climate automatically and gives you complete control from your phone or tablet. Achieving maximum comfort and minimum energy consumption, while doing nature a favour at the same time.



- Room unit with 2,8" touch display with swipe function.
- Control and monitor your NIBE S series heat pump from another room.
- A part of your energy-saving smart home in combination with a NIBE S series heat pump.

NIBE RMU S40		
Connection		Wireless or wired to heat pump
Power supply		Wired to heat pump or via 5V USB supply
Plastic spacer	mm	85 x 85 x 35
Height / Width / Depth	mm	83 / 63 / 21

Get a connected future with myUplink

The myUplink app allows you to control your smart heat pump from your smart phone.

With the launch of the smart S Series, the newly developed myUplink app is also released, the key to your smart home and a connected future.

Simplicity and clarity have been leading principles in the development of myUplink. You will be able to find what you need instantly, without having to search around in the product display menu.

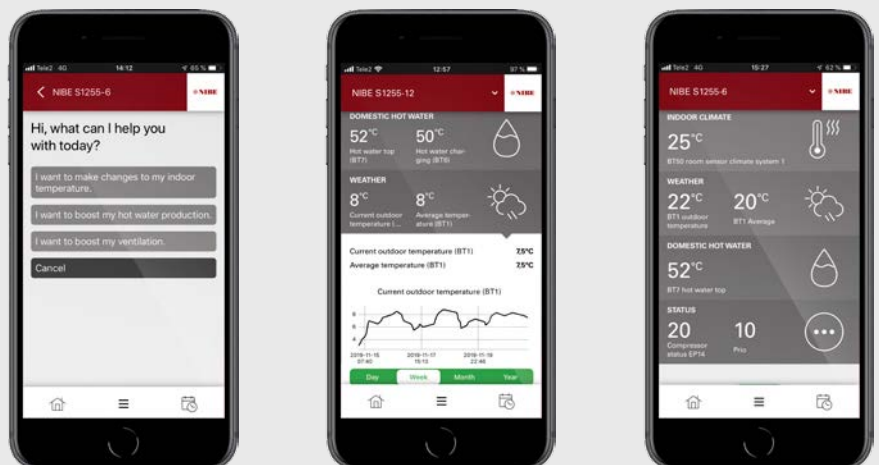
Via the new, simplistic, Scandinavian-designed interface, you can retrieve real-time data from your heat pump, monitor your installation from your smart phone or tablet and ensure that your heat pump is working flawlessly. Smart Price Adaption*, software updates, monitoring, alerts and weather forecast control are included as standard.

A premium subscription allows you to easily control and adjust your smart heat pump's settings, wherever you are. A premium subscription is also required for the IFTTT and voice assistant services.

By allowing you control over your hot water and indoor climate, the app also helps you to make energy savings. Good for the environment and good for your wallet.

myUplink is an important element of our future products, and will be updated with new functions that increase comfort and reduce energy consumption.

Using a heat pump has never been easier.



* This requires a variable hourly tariff contract
Not available in all countries

Ground source heat pumps from NIBE

The new NIBE S Series | myUplink

myUplink

Using the Internet and myUplink you can get a quick overview of the status of your heat pump and the heating in your property. This flexible solution allows you to easily monitor and control your heating and hot water production. If your system is affected by an operational disturbance you receive an alert via a push-message and an email, allowing you to react quickly.

- *An efficient tool that gives you quick and easy control over your property's heat pump, no matter where you are.*
- *Clear, easy to use system for monitoring and controlling heating and hot water temperatures for maximum comfort.*
- *Stores your heat pump's operational data, presented in a user-friendly graph.*



ALWAYS UP TO DATE

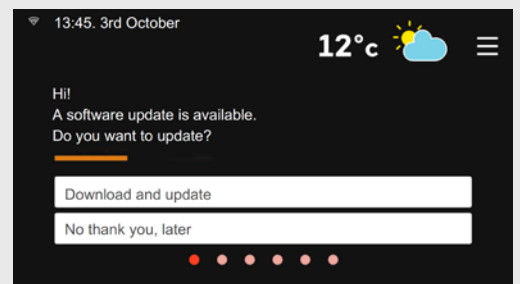
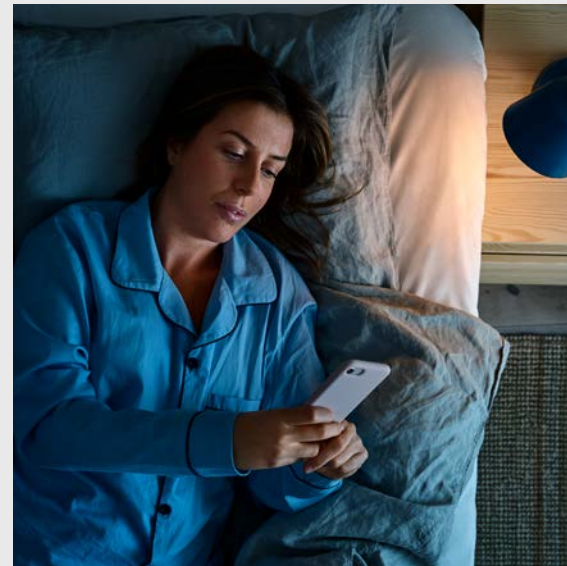
myUplink makes it possible to wirelessly update the software, in order to provide you with the best operation and the latest functions. All you need to do is approve the update in the heat pump's display.

WEATHER CONTROL

Weather control allows your heat pump to adapt to the weather forecast, a particularly good feature when weather changes rapidly. The smart heat pump is more proactive and knows when there's a predicted weather change, effectively managing the temperature change accordingly.

SMART PRICE ADAPTION*

This clever feature gives you the option to choose variable pricing for your energy plan. You can then automatically purchase energy when the price is low, and use self-produced or stored energy when the price is high.



*) This requires a variable hourly tariff contract
Not available in all countries

The NIBE F series

NIBE F1255

NIBE F1255 is an intelligent, inverter-controlled ground source heat pump with integrated water heater. NIBE F1255 provides optimum savings since the heat pump always performs efficiently and automatically adapts to your home's heating demand all year round. NIBE is a leading player in the field of inverter technology, with many years' experience of variable output ground source heat pumps and one of the widest product ranges on the market.

NIBE F1255 has a high seasonal performance factor, resulting in minimal operating costs. The heat pump is available in three different output sizes: 1.5–6 kW, 3–12 kW and 4–16 kW, and is suitable for both small and large properties.

Thanks to smart technology, the product gives you control over your energy consumption and will be a key part of your connected home. The efficient control system automatically adjusts the indoor climate for maximum comfort, and you do nature a favour at the same time.

- Three output sizes and leading inverter technology for optimum customization.
- Optimal seasonal performance factor and minimal operating costs.
- Energy-saving smart technology with user-friendly control for maximum comfort.



NIBE F1255		1.5–6 kW	3–12 kW	4–16 kW
Space heating efficiency class 35°C / 55°C ¹⁾		A+++ / A+++		
Space heating efficiency class of the system 35°C / 55°C ²⁾		A+++/A+++		
Efficiency class hot water / charging profile ³⁾		A / XL		
Nominal heating output (P _{designH})	kW	6	12	16
SCOP _{EN14825} cold climate, 35°C / 55°C		5.5 / 4.1	5.4 / 4.3	5.5 / 4.2
SCOP _{EN14825} average climate, 35°C / 55°C		5.2 / 4.0	5.2 / 4.1	5.2 / 4.1
Output data according to EN 14511 nominal 0/35 – Rated output	kW	3.15	5.06	8.89
Output data according to EN 14511 nominal 0/35 – COP _{EN14511}		4.72	4.87	4.85
Sound power level (L _{WA}) according to EN 12102 at 0/35	dB(A)	36–43	36–47	36–47
Rated voltage		400V 3N ~ 50 Hz		
Refrigerant amount in CO ₂ -equivalent	ton	2.06	3.55	3.90
Height / Width / Depth	mm	1800 / 600 / 620		
Intergrated hot water heater	l	180		
Weight complete heat pump	kg	220	250	255

¹⁾ Scale for the product's efficiency class room heating: A+++ – D. ²⁾ Scale for the system's efficiency class room heating: A+++ – G. Reported efficiency for the system takes the product's temperature regulator into account. ³⁾ Scale for efficiency class hot water: A+ – F.

Ground source heat pumps from NIBE

The NIBE F series | Products

NIBE F1255 PC NIBE F1255 PC is an intelligent, inverter-controlled ground source heat pump with integrated passive cooling and an integrated hot water tank.

NIBE F1255 PC provides optimum savings since the heat pump always performs efficiently and automatically adapts to your home's heating demand all year round. NIBE is a leading player in the field of inverter technology, with many years' experience of variable output ground source heat pumps and one of the widest product ranges on the market. NIBE F1255 PC has a high seasonal performance factor, resulting in minimal operating costs. The heat pump is available in the output size: 1.5–6 kW.

Thanks to smart technology, the product gives you control over your energy consumption and will be a key part of your connected home. The efficient control system automatically adjusts the indoor climate for maximum comfort, and you do nature a favour at the same time.



The system's efficiency class for heating.



The product's efficiency class and tap profile for hot water.

- Heat pump with integrated hot water tank and cooling.
- High seasonal performance factor and minimal operating costs with leading inverter technology that adjust operation according to requirements.
- Energy-saving smart technology with user-friendly control for maximum comfort.

<i>NIBE F1255 PC</i>		1.5–6 kW
Space heating efficiency class 35°C / 55°C ¹⁾		A+++ / A+++
Space heating efficiency class of the system 35°C / 55°C ²⁾		A+++/A+++
Efficiency class hot water / charging profile ³⁾		A / XL
Nominal heating output (P _{designH})	kW	6
SCOP _{EN14825} cold climate, 35°C / 55°C		5.5 / 4.1
SCOP _{EN14825} average climate, 35°C / 55°C		5.2 / 4.0
Output data according to EN 14511 nominal 0/35 – Rated output	kW	3.15
Output data according to EN 14511 nominal 0/35 – COP _{EN14511}		4.72
Sound power level (L _{WA}) according to EN 12102 at 0/35	dB(A)	36 – 43
Rated voltage		400V 3N ~ 50 Hz
Refrigerant amount in CO ₂ -equivalent	ton	2.06
Height / Width / Depth	mm	1800 / 600 / 620
Intergrated hot water heater	l	180
Weight complete heat pump	kg	240

¹⁾ Scale for the product's efficiency class room heating: A+++ – D. ²⁾ Scale for the system's efficiency class room heating: A+++ – G. Reported efficiency for the system takes the product's temperature regulator into account. ³⁾ Scale for efficiency class hot water: A+ – F.

NIBE F1155

NIBE F1155 is an intelligent, inverter-controlled ground source heat pump without integrated hot water tank, which makes it easy to install in locations with low ceilings. A separate hot water tank is selected according to hot water requirements. NIBE F1155 provides optimum savings since the heat pump automatically adapts to your home's heating demand. NIBE is a leading player in the field of inverter technology, with many years' experience of output-regulating ground source heat pumps and one of the widest product ranges on the market.

NIBE F1155 has a high seasonal performance factor, resulting in minimal operating costs. The heat pump is available in three different output sizes: 1.5–6 kW, 3–12 kW and 4–16 kW, and is suitable for both small and large properties.

Thanks to smart technology, the product gives you control over your energy consumption and will be a key part of your connected home. The efficient control system automatically adjusts the indoor climate for maximum comfort, and you do nature a favour at the same time.

- Leading inverter technology and separate hot water tank for optimum customization.
- Three output sizes for optimal seasonal performance factor and minimal operating costs.
- Energy-saving smart technology with user-friendly control for maximum comfort.



NIBE F1155		1.5 – 6 kW	3 – 12 kW	4 – 16 kW
Space heating efficiency class 35°C / 55°C ¹⁾		A+++ / A+++		
Space heating efficiency class of the system 35°C / 55°C ²⁾		A+++ / A+++		
Efficiency class hot water / charging profile with VPB 300 ³⁾		A / XL	A / XXL	
Nominal heating output (P _{design,h})	kW	6	12	16
SCOP _{EN14825} cold climate, 35°C / 55°C		5.5 / 4.1	5.4 / 4.3	5.5 / 4.2
SCOP _{EN14825} average climate, 35°C / 55°C		5.2 / 4.0	5.2 / 4.1	5.2 / 4.1
Output data according to EN 14511 nominal 0/35 – Rated output	kW	3.15	5.06	8.89
Output data according to EN 14511 nominal 0/35 – COP _{EN14511}		4.72	4.87	4.85
Sound power level (L _{WA}) according to EN 12102 at 0/35	dB(A)	36 – 43	36 – 47	36 – 47
Rated voltage		230 V ~ 50 Hz		
Refrigerant amount in CO ₂ -equivalent	ton	2.06	3.55	3.90
Height / Width / Depth	mm	1500 / 600 / 620		
Weight complete heat pump	kg	150	180	185

¹⁾ Scale for the product's efficiency class room heating: A+++ – D. ²⁾ Scale for the system's efficiency class room heating: A+++ – G. Reported efficiency for the system takes the product's temperature regulator into account. ³⁾ Scale for efficiency class hot water: A+ – F.

Ground source heat pumps from NIBE

The NIBE F series | Products

NIBE F1155 PC The NIBE F1155 PC is an intelligent, inverter-controlled ground source heat pump with integrated passive cooling. The heat pump is easy to install even in locations with low ceilings, since the hot water tank is separate and is chosen according to hot water requirements. The NIBE F1155 PC provides optimum savings since the heat pump automatically adapts to your home's heating demand.

NIBE is a leading player in the field of inverter technology, with many years' experience of variable output ground source heat pumps and one of the widest product ranges on the market. The NIBE F1155 PC has a high seasonal performance factor, resulting in minimal operating costs. The heat pump is available in the output size: 1.5–6 kW.

Thanks to smart technology, the product gives you control over your energy consumption and will be a key part of your connected home. The efficient control system automatically adjusts the indoor climate for maximum comfort, and you do nature a favour at the same time.

- Leading inverter technology and separate water heater for optimum customization.
- Integrated cooling, high seasonal performance factor and minimal operating costs.
- Energy-saving smart technology with user-friendly control for maximum comfort.



The system's efficiency class for heating.



The product's efficiency class and tap profile for hot water.

NIBE F1155 PC		1.5–6 kW
Space heating efficiency class 35°C / 55°C ¹⁾		A+++ / A+++
Space heating efficiency class of the system 35°C / 55°C ²⁾		A+++/A+++
Efficiency class hot water / charging profile with VPB S300 ³⁾		A / XL
Nominal heating output (P _{designh})	kW	6
SCOP _{EN14825} cold climate, 35°C / 55°C		5.5 / 4.1
SCOP _{EN14825} average climate, 35°C / 55°C		5.2 / 4.0
Output data according to EN 14511 nominal 0/35 – Rated output	kW	3.15
Output data according to EN 14511 nominal 0/35 – COP _{EN14511}		4.72
Sound power level (L _{WA}) according to EN 12102 at 0/35	dB(A)	36 – 43
Rated voltage		400V 3N ~ 50 Hz
Refrigerant amount in CO ₂ -equivalent	ton	2.06
Height / Width / Depth	mm	1500 / 600 / 620
Weight complete heat pump	kg	155

¹⁾ Scale for the product's efficiency class room heating: A+++ – D. ²⁾ Scale for the system's efficiency class room heating: A+++ – G. Reported efficiency for the system takes the product's temperature regulator into account. ³⁾ Scale for efficiency class hot water: A+ – F.

Ground source heat pumps from NIBE

The NIBE F series | Products

NIBE F1245

NIBE F1245 is an all-in-one heat pump with an integrated water heater with a capacity of 180 litres.

NIBE F1245 has high seasonal efficiency and a high temperature range. NIBE F1245 is available in the following output sizes: 6, 8, 10 and 12 kW. The heat pump is suitable for detached and terraced houses.

Thanks to smart technology, the product gives you control over your energy consumption and will be a key part of your connected home. The efficient control system automatically adjusts the indoor climate for maximum comfort, and you do nature a favour at the same time.



- Efficient, all-in-one heat pump with integrated hot water tank.
- High seasonal efficiency – high temperature range.
- Energy-saving smart technology with user-friendly control.

NIBE F1245		6 kW	8 kW	10 kW	12 kW
Space heating efficiency class 35°C / 55°C ¹⁾		A+++/A++			
Space heating efficiency class of the system 35°C / 55°C ²⁾		A+++/A++	A+++/A+++	A+++/A++	
Efficiency class hot water / charging profile ³⁾		A/XL			
Nominal heating output (P _{designh})	kW	7/7	10/9	13/12	14/14
SCOP _{EN14825} cold climate, 35°C / 55°C		4.8 / 3.8	5.0 / 4.0	4.9 / 3.9	4.9 / 3.8
SCOP _{EN14825} average climate, 35°C / 55°C		4.7 / 3.7	4.9 / 3.9	4.8 / 3.8	4.8 / 3.7
Output data according to EN 14511 nominal 0/35 – Rated output	kW	5.69	7.93	10.09	11.48
Output data according to EN 14511 nominal 0/35 – COP _{EN14511}		4.47	4.67	4.60	4.57
Sound power level (L _{WA}) ²⁾ according to EN 12102 at 0/35	dB(A)	41	38	42	43
Rated voltage		400 V 3N ~ 50 Hz			
Refrigerant amount in CO ₂ -equivalent	ton	2.66	3.19	3.73	3.55
Height / Width / Depth	mm	1800 / 600 / 620			
Intergrated hot water heater	l	ca 180			
Weight complete heat pump	kg	230	240	245	260

¹⁾ Scale for the system's efficiency class room heating: A+++ – G. Reported efficiency for the system takes the product's temperature regulator into account.

²⁾ Scale for the product's efficiency class room heating: A+++ – D ³⁾ Scale for efficiency class hot water: A+ – F.

Ground source heat pumps from NIBE

The NIBE F series | Products

NIBE F1245 PC The NIBE F1245 PC is an all-in-one heat pump with hot water tank with a capacity of 180 litres and integrated passive cooling.

The NIBE F1245 PC has a high seasonal performance factor and a high temperature range. The NIBE F1245 is available in the following output sizes: 6, 8, 10 kW. The heat pump is suitable for detached and terraced houses.

Thanks to smart technology, the product gives you control over your energy consumption and will be a key part of your connected home. The efficient control system automatically adjusts the indoor climate for maximum comfort, and you do nature a favour at the same time.



The system's efficiency class for heating.



The product's efficiency class and tap profile for hot water.

- All-in-one heat pump with hot water tank and integrated cooling.
- High seasonal performance factor – high temperature range.
- Energy-saving smart technology with user-friendly control.

NIBE F1245 PC		6 kW	8 kW	10 kW
Space heating efficiency class 35°C / 55°C ¹⁾		A+++/A++		
Space heating efficiency class of the system 35°C / 55°C ²⁾		A+++/A++	A+++/A+++	A+++/A++
Efficiency class hot water / charging profile ³⁾		A/XL		
Nominal heating output (P _{designh})	kW	7/7	10/9	13/12
SCOP _{EN14825} cold climate, 35°C / 55°C		4.8 / 3.8	5.0 / 4.0	4.9 / 3.9
SCOP _{EN14825} average climate, 35°C / 55°C		4.7 / 3.7	4.9 / 3.9	4.8 / 3.8
Output data according to EN 14511 nominal 0/35 – Rated output	kW	5,69	7,93	10,09
Output data according to EN 14511 nominal 0/35 – COP _{EN14511}		4,47	4,67	4,60
Sound power level (L _{WA}) according to EN 12102 at 0/35	dB(A)	41	38	42
Rated voltage		400 V 3N ~ 50 Hz		
Refrigerant amount in CO ₂ -equivalent	ton	2.66	3.19	3.73
Height / Width / Depth	mm	1800 / 600 / 620		
Intergrated hot water heater	l	ca 180		
Weight complete heat pump	kg	265	275	280

¹⁾ Scale for the system's efficiency class room heating: A+++ – G. Reported efficiency for the system takes the product's temperature regulator into account.

²⁾ Scale for the product's efficiency class room heating: A+++ – D ³⁾ Scale for efficiency class hot water: A+ – F.

NIBE F1145

NIBE F1145 is an efficient heat pump without integrated hot water tank, which makes it easy to install in locations with low ceilings. A separate hot water tank is selected according to hot water requirements.

NIBE F1145 has high seasonal efficiency and a high temperature range. NIBE F1145 is available in the following output sizes: 5, 6, 8, 10, 12, 15 and 17 kW, and is therefore suitable for both apartments and houses.

Thanks to smart technology, the product gives you control over your energy consumption and will be a key part of your connected home. The efficient control system automatically adjusts the indoor climate for maximum comfort, and you do nature a favour at the same time.



The system's efficiency class for heating.



The product's efficiency class and tap profile for hot water.

- Efficient, easy-to-install heat pump where the hot water tank is selected according to requirements.
- High seasonal efficiency – high temperature range.
- Energy-saving smart technology and user-friendly control.

NIBE F1145		6 kW	8 kW	10 kW	12 kW	15 kW	17 kW	
Space heating efficiency class 35°C / 55°C ¹⁾		A+++/A++					A++/A++	
Space heating efficiency class of the system 35/55°C ²⁾		A+++/A++	A+++/A+++	A+++/A++			A+++/A++	
Efficiency class hot water / charging profile ³⁾		A/XXL – with VPB 300				A/XXL – with VPB 500		
Nominal heating output (P _{designh})	kW	7/7	10/9	13/12	14/14	18/18	20/20	
SCOP _{EN14825} cold climate, 35°C / 55°C		4.8 / 3.8	5.0 / 4.0	4.9 / 3.9	4.9/3.8	4.7/3.7	4.5/3.7	
SCOP _{EN14825} average climate, 35°C / 55°C		4.7 / 3.7	4.9 / 3.9	4.8 / 3.8	4.8/3.7	4.6/3.7	4.4/3.6	
Output data according to EN 14511 nominal 0/35 – Rated output	kW	5.69	7.93	10.09	11.48	15.37	16.89	
Output data according to EN 14511 nominal 0/35 – COP _{EN14511}		4.47	4.67	4.60	4.57	4.42	4.30	
Sound power level (L _{WA}) ^{0/35} according to EN 12102 at	dB(A)	41	38	42	43	42	42	
Rated voltage		400 V 3N ~ 50 Hz						
Refrigerant amount in CO ₂ -equivalent	ton	2.66	3.19	3.73	3.55	3.55	3.55	
Height / Width / Depth	mm	1500/600/620						
Weight complete heat pump	kg	170	180	185	190	200	205	

¹⁾ Scale for the system's efficiency class room heating: A+++ – G. Reported efficiency for the system takes the product's temperature regulator into account.

²⁾ Scale for the product's efficiency class room heating: A+++ – D ³⁾ Scale for efficiency class hot water: A+ – F.

Ground source heat pumps from NIBE

The NIBE F series | Products

NIBE F1145 PC The NIBE F1145 PC is an efficient heat pump with integrated cooling. The heat pump is easy to install even in locations with low ceilings, since the hot water tank is separate and is chosen according to hot water requirements.

The NIBE F1145 PC has high a seasonal performance factor and a high temperature range. The NIBE F1145 PC is available in the following output sizes: 6, 8, 10 kW, and is therefore suitable for both apartments and houses.

Thanks to smart technology, the product gives you control over your energy consumption and will be a key part of your connected home. The efficient control system automatically adjusts the indoor climate for maximum comfort, and you do nature a favour at the same time.



The system's efficiency class for heating.



The product's efficiency class and tap profile for hot water.

- Efficient heat pump and separate water heater for optimum customization.
- Integrated cooling and high seasonal performance factor.
- Energy-saving smart technology with user-friendly control for maximum comfort.

NIBE F1145 PC		6 kW	8 kW	10 kW
Space heating efficiency class 35°C / 55°C ¹⁾		A+++/A++		
Space heating efficiency class of the system 35°C / 55°C ²⁾		A+++/A++	A+++/A+++	A+++/A++
Efficiency class hot water / charging profile with VPB 300 ³⁾		A/XXL		
Nominal heating output (P _{designh})	kW	7/7	10/9	13/12
SCOP _{EN14825} cold climate, 35°C / 55°C		4.8 / 3.8	5.0 / 4.0	4.9 / 3.9
SCOP _{EN14825} average climate, 35°C / 55°C		4.7 / 3.7	4.9 / 3.9	4.8 / 3.8
Output data according to EN 14511 nominal 0/35 – Rated output	kW	5.69	7.93	10.09
Output data according to EN 14511 nominal 0/35 – COP _{EN14511}		4.47	4.67	4.60
Sound power level (L _{WA}) according to EN 12102 at 0/35	dB(A)	41	38	42
Rated voltage		400 V 3N ~ 50 Hz		
Refrigerant amount in CO ₂ -equivalent	ton	2.66	3.19	3.73
Height / Width / Depth				
Weight complete heat pump	kg	180	190	195

¹⁾ Scale for the system's efficiency class room heating: A+++ – G. Reported efficiency for the system takes the product's temperature regulator into account.

²⁾ Scale for the product's efficiency class room heating: A+++ – D ³⁾ Scale for efficiency class hot water: A+ – F.

Ground source heat pumps from NIBE

The NIBE F series | Products

NIBE F1226

NIBE F1226 is an all-in-one heat pump with integrated hot water tank. The heat pump is designed for detached and terraced houses.

NIBE F1226 has an efficient compressor which provides high seasonal efficiency. The heat pump is available in the following output sizes: 6, 8 and 12 kW.

NIBE F1226 is equipped with a control unit for reliable operation. A large backlit display uses icons and text to display clear information about status, operating time and all temperatures in the heat pump.



The system's efficiency class for heating.



The product's efficiency class and tap profile for hot water.

- All-in-one heat pump with integrated hot water tank.
- Efficient compressor provides high seasonal efficiency.
- Reliable operation and user-friendly display.

NIBE F1226		6 kW	8 kW	12 kW
Space heating efficiency class 35°C / 55°C ¹⁾		A++/A++	A+++/A++	A++/A++
Space heating efficiency class of the system 35°C / 55°C ²⁾		A+++/A++		
Efficiency class hot water / charging profile ³⁾		A/XL		
Nominal heating output (P _{design,h})	kW	7/6	9/8	13/13
SCOP _{EN14825} cold climate. 35°C / 55°C		4.5/3.5	4.8/3.8	4.6/3.6
SCOP _{EN14825} average climate. 35°C / 55°C		5.39	7.73	11.52
Output data according to EN 14511 nominal 0/35 – Rated output	kW	4.17	4.48	4.30
Output data according to EN 14511 nominal 0/35 – COP _{EN14511}		42	39	44
Sound power level (L _{WA}) according to EN 12102 at 0/35	dB(A)	43	44	44
Rated voltage		400V 3N ~ 50Hz		
Refrigerant amount in CO ₂ -equivalent	ton	1.51	1.95	2.13
Height / Width / Depth	mm	1800/600/620		
Integrated hot water heater	l	ca 180		
Weight complete heat pump	kg	235	245	255

¹⁾ Scale for the system's efficiency class room heating: A+++ – G. Reported efficiency for the system takes the product's temperature regulator into account.

²⁾ Scale for the product's efficiency class room heating: A+++ – D. ³⁾ Scale for efficiency class hot water: A+ – F.

Ground source heat pumps from NIBE

The NIBE F series | Products

NIBE F1126

NIBE F1126 is an all-in-one heat pump without integrated hot water tank, which makes it easy to install in locations with low ceilings. A separate hot water tank is selected according to hot water requirements. The heat pump is suitable for detached and terraced houses.

NIBE F1126 has an efficient compressor which provides high annual efficiency. The heat pump is available in the output sizes 6, 8 and 12 kW.

NIBE F1126 is equipped with a control unit for reliable operation. A large backlit display uses icons and text to display clear information about status, operating time and all temperatures in the heat pump.



The system's efficiency class for heating.



The product's efficiency class and tap profile for hot water.

- Easy-to-install heat pump where hot water tank is selected according to requirements.
- Efficient compressor provides high seasonal efficiency.
- Reliable operation and user-friendly display.

NIBE F1126		6 kW	8 kW	12 kW
Space heating efficiency class 35°C / 55°C ¹⁾		A++/A++	A+++/A++	A++/A++
Space heating efficiency class of the system 35°C / 55°C ²⁾		A++	A+++/A++	A++/A++
Efficiency class hot water / charging profile with VPB 300 ³⁾		A/XXL		
Nominal heating output (P _{designh})	kW	7/6	9/8	13/13
SCOP _{EN14825} cold climate, 35°C / 55°C		4.4/3.3	4.8/3.7	4.6/3.6
SCOP _{EN14825} average climate, 35°C / 55°C		4.3/3.3	4.7/3.6	4.5/3.5
Output data according to EN 14511 nominal 0/35 –	kW	5.49	7.37	11.52
Output data according to EN 14511 nominal 0/35 – COP _{EN14511}		4.17	4.46	4.30
Sound power level (L _{WA}) according to EN 12102 at 0/35	dB(A)	43	44	44
Rated voltage		400V 3N ~ 50Hz		
Refrigerant amount in CO ₂ -equivalent	ton	1.6	1.95	2.13
Height / Width / Depth	mm	1500/600/620		
Weight complete heat pump	kg	150	185	180

¹⁾ Scale for the system's efficiency class room heating: A+++ – G. Reported efficiency for the system takes the product's temperature regulator into account.

²⁾ Scale for the product's efficiency class room heating: A+++ – D ³⁾ Scale for efficiency class hot water: A+ – F.

Ground source heat pumps from NIBE

The NIBE F series | Products

NIBE F1355

NIBE F1355 is an intelligent and powerful inverter-controlled ground source heat pump in two sizes. NIBE F1355 provides optimum savings since the heat pump always performs efficiently and automatically adapts to the property's output requirements all year round.

NIBE F1355 has a high seasonal performance factor and an operating range of 4–28 kW or 6–43 kW. With less than 5 tonnes CO₂ equivalent refrigerant volume per refrigeration module, NIBE F1355 does not require annual inspection. Two compressors provide efficient output regulation and high reliability, making NIBE F1355 perfect for properties with larger heating requirements.



System's efficiency class for room heating, 35 °C.



System's efficiency class for room heating, 55 °C.

- Powerful and flexible ground source heat pump in two sizes. Master/Slave compatible and in combination with NIBE F1345.
- Inverter technology for minimal operating cost and optimal seasonal performance factor.
- Smart technology with user-friendly control for easy remote control.

NIBE F1355		28	43
Space heating efficiency class of the system 35°C / 55°C ¹⁾		A+++ / A+++	
The product's room heating efficiency class 35 °C / 55 °C ²⁾		A+++ / A+++	
SCOP _{EN14825} average climate, 35°C / 55°C		5.0 / 4.0	5.0 / 4.0
SCOP _{EN14825} cold climate, 35°C / 55°C		5.4 / 4.2	5.3 / 4.1
Heating capacity	kW	4–28	6–43
Nominal heating capacity P _{design} 35 °C / 55 °C	kW	28	45/42
Heating capacity (P _H)	kW	4–28	6–43
Heating capacity (P _H) _{EN 14511} nominal 0/35	kW	20.77	31.10
Sound power level (L _{WA}) _{EN 12102} at 0/35	dB(A)	47	
Rated voltage	V	400V 3N ~ 50 Hz	
Refrigerant amount in CO ₂ -equivalent	ton	Upper cooling module: 3.55 Lower cooling module: 3.90	Upper cooling module: 3.02 Lower cooling module: 4.39
Height / Width / Depth	mm	1800 / 600 / 620	
Weight	kg	335	351

¹⁾ Scale for the system's efficiency class room heating: A+++ – G. Reported efficiency for the system takes the product's temperature regulator into account.

²⁾ Scale for the product's efficiency class room heating: A+++ – D

Ground source heat pumps from NIBE

The NIBE F series | Products

NIBE F1345

NIBE F1345 is a powerful, flexible ground source heat pump which is available in the output sizes 24, 30, 40 and 60 kW. Up to nine NIBE F1345s can be combined in a single system to cover output requirements of up to 540 kW.

NIBE F1345 has a high seasonal performance factor, and with less than 5 tonnes CO₂ equivalent refrigerant volume per compressor module, NIBE F1345 does not require annual inspection. Two large compressors make NIBE F1345 perfect for properties with larger heating requirements. The compressors are switched on and off automatically for better output regulation, a longer operating range, less wear and tear and improved reliability.

Thanks to smart technology, the product gives you control over your energy consumption and will be a key part of your connected lifestyle. The efficient control system automatically adjusts the indoor climate for maximum comfort, and you do nature a favour at the same time.

- Powerful, flexible system that covers output requirements of up to 540 kW.
- Reliable system with efficient output regulation and no requirement for annual inspection.
- Smart technology with user-friendly control



The system's efficiency class for heating.



The product's efficiency class and tap profile for hot water.

NIBE F1345		24 kW	30 kW	40 kW	60 kW
Space heating efficiency class of the system 35°C / 55°C ¹⁾		A+++/A++			
Space heating efficiency class 35°C / 55°C ²⁾		A+++ / A++			
SCOP _{EN14825} average climate, 35°C / 55°C		4.8 / 3.8	4.7 / 3.6	4.8 / 3.8	4.6 / 3.7
SCOP _{EN14825} cold climate, 35°C / 55°C		5.0 / 4.0	4.9 / 3.8	5.0 / 3.9	4.7 / 3.8
Nominal heating output (P _{design})	kW	28	35	46	67
Output data according to EN 14511 nominal 0/35 – COP _{EN14511}		4.65	4.44	4.49	4.32
Sound power level (L _{WA}) ²⁾ according to EN 12102 at 0/35	dB(A)	47			
Rated voltage		400V 3N ~ 50 Hz			
Refrigerant amount in CO ₂ -equivalent	ton	2 x 3.55	2 x 3.55	2 x 3.02	2 x 3.55
Height / Width / Depth	mm	1800 / 600 / 620			
Weight complete heat pump	kg	320	330	345	346

¹⁾ Scale for the system's efficiency class room heating: A+++ – G. Reported efficiency for the system takes the product's temperature regulator into account.

²⁾ Scale for the product's efficiency class room heating: A+++ – D

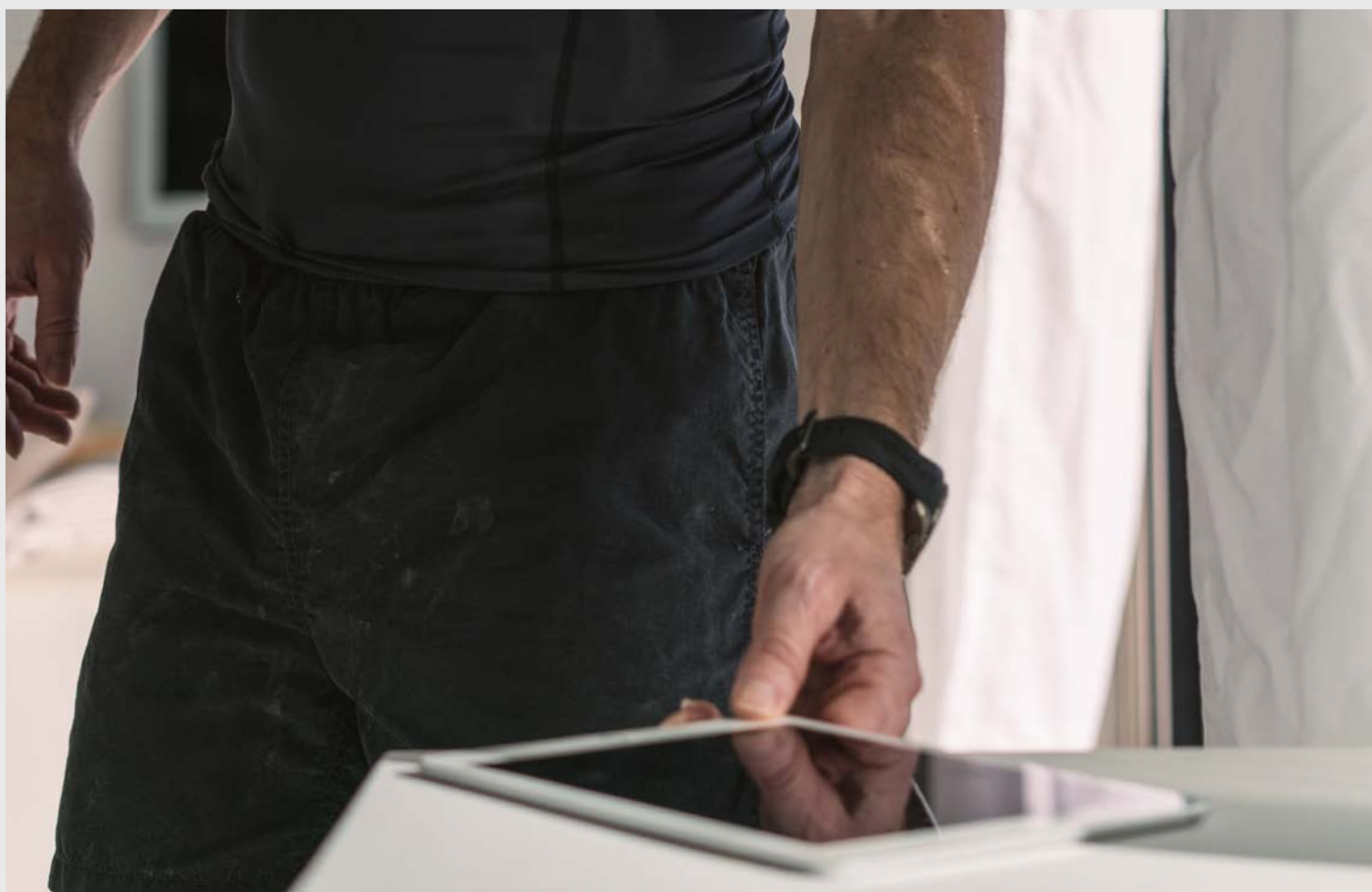
For your everyday comfort





A connected indoor system

We strive to maximise the outcome of every product carrying the NIBE name, while always focusing on the system as a whole through connectivity and flexibility. Controlling everything with its software, the system allows you to integrate products within your home to create a balanced indoor climate with minimal impact on the environment.



Ground source heat pumps from NIBE

The NIBE F series | Uplink

NIBE UPLINK

Freedom – anywhere, any time

Using the Internet and NIBE Uplink you can get a quick overview and the present status of your heat pump and the heating in your property. You get a good overall view where you can follow and control your heating and hot water production. If your system is affected by an operational disturbance you receive an alert via e-mail that allows you to react quickly.

- An efficient tool that gives you quick and easy control over your property's heat pump wherever you are.
- Clear, easy way of monitoring and controlling heating and water temperatures for maximum comfort.
- Provides logging of heat pump parameters presented in a user-friendly history chart.



PUBLIC API

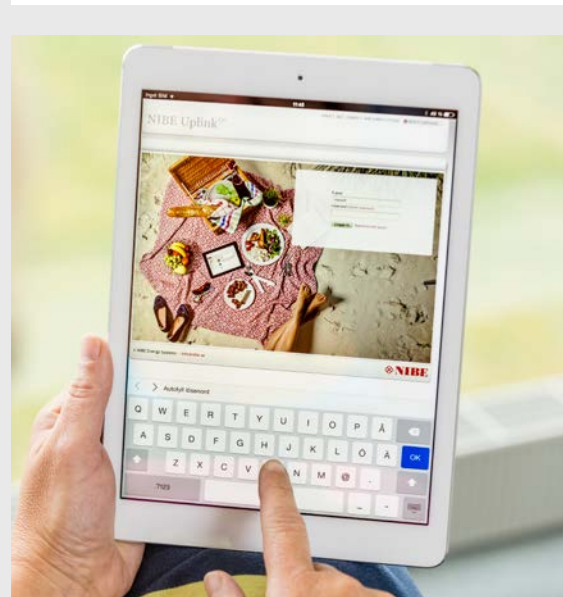
API functionality for external integration of e.g. home management systems and BMS.

IFTTT

A free web-based service that enables you to really make full use of your smart home technology. Connect products and services in your home for maximum comfort.

SMART PRICE ADAPTION*

This is a clever feature if you have the option to choose variable pricing for your energy plan. You will then automatically purchase energy when the price is low, and use self-produced or stored energy when the price is high.



*This requires a variable hourly tariff contract
Not available in all countries

Additional functions

Turn your climate system complete with accessories, dockings, and solutions for your ground source units.

<i>Active cooling</i>	This accessory makes it possible to control production of heating and cooling independently of each other in a 4-pipe installation.
<i>Energy meter</i>	Measures the amount of energy provided by the heat pump system.
<i>External heat sources & thermal solar</i>	<p>Add an additional heat source to your system. Choose between an intermittent heat source such as a wood boiler, or a fully controlled such as oil boilers or electrical heaters.</p> <p>An intermittent heat source can be connected with the prioritization function. This way, if the heat source becomes available, it will become the primary energy source for your system.</p>
<i>Extra climate system</i>	Adding an extra climate system enable you to control different supply temperatures in the climate system. The extra climate system can be configured to be used for heating, cooling, or combined heating and cooling applications.
<i>Exhaust air module</i>	Recycles energy from the warm exhaust air inside the property.
<i>GSM remote control</i>	Communication unit for remote control and monitoring.
<i>Modbus</i>	Monitor and control your heat pump via Modbus.

<i>Pool</i>	Since the outdoor unit has an excessive heating capacity, the pool doesn't need to be taken in consideration when sizing the outdoor unit. Although, it depends on the type of your pool and how you use it.
<i>PV solar package</i>	Our solar panels are available in packs of 3,2 / 6,4 / 9,6 / 12,8 and 16 kW and are suited to fit on most types roofs – tiles, metal roofing, seamed metal roof and felt roof.
<i>Room display</i>	Control and monitor your heat pump from rooms outside of the one containing the heat pump. The room display also has a built-in temperature sensor.
<i>Ventilation</i>	Ventilation solutions both for mechanical extract ventilation and balanced ventilation with heat recovery, ERS, are available. The solution for mechanical extract ventilation extracts energy from the exhaust air and put the energy back in the system and works in the same way as the outdoor unit. The ERS offers a balanced ventilation where heat from the exhaust is direct transferred to the incoming fresh air.
<i>Water heaters</i>	Regardless of your hot water needs, we have the right solution for you. Our full range of hot water solutions complement our selection of heat pumps and biomass boilers.

Ground source heat pumps from NIBE
Sustainable climate solutions for your individual journey

Smart, sustainable energy solutions from NIBE

NIBE Energy Systems offers a complete range of energy-efficient solutions for heating, ventilation, cooling, hot water and heat recovery that enable private and commercial property owners to choose a system that best suits their indoor climate needs.



Ground source heat pumps

Ground source heat is stored solar energy harvested from deep within the ground, the bottom of lakes or simply just below your lawn. The system supplies your home with both heat and hot water during colder winter months, as well as cooling during hot summer days.

Air/water heat pumps

Investing in an air/water heat pump, gives you two systems to choose from – Monobloc and Split. Both contains an outdoor and indoor module creating a complete heating and hot water system. Using one of nature's free and renewable energy sources, the air/water heat pump will in the long run pay for itself.

Exhaust air heat pumps

Installing an exhaust air heat pump is a profitable and easy way to warm up your home, supply it with hot water and keep it well-ventilated. Reuse the energy from the warm indoor air as it passes through your ventilation system to create an ideal solution for your modern home.

Solar panels

Start producing your own energy with solar products from NIBE. When connected to your smart heat pump, the pump will multiply the energy you harvest. By integrating products into one system, you can reduce your energy costs and use renewable energy efficiently.

Domestic boilers

If you want to use a renewable biofuel, a wood-fired boiler is an ideal solution for a countryside home. Combine a biomass boiler with other energy sources and connect these to your heat pump. Use Smart Energy Source to establish the most sustainable and economical indoor system.

Water heaters

Creating water solutions for over 60 years, NIBE now enables controlling your water heater remotely with smart technology. Recognizing user patterns and adapting to improve energy usage, our full range of hot water solutions complements our selection of heat pumps and biomass boilers.

Practical and customised for pools



The 18-year old oil boiler was still doing its job, but Peter and Sofia nevertheless started researching other heating systems. Lucky for them that they did. When the boiler suddenly broke down around Christmas time 18 months ago, the family wasted no time in replacing it with a NIBE F1255-16. Practical and customised for pools Ground source heat pumps from NIBE Sustainable indoor comfort – every day

Ground source heat pumps from NIBE
Sustainable climate solutions for your individual journey

Background

The research Peter and Sofia carried out was based on a number of criteria. Most of all, they did not want a system that would take up any of their time. They also needed a heating system that could be connected to the pool.

Solution

After reviewing several price quotes, they finally chose the ground source heat pump, NIBE F1255-16. The model offered numerous accessories, one of which was a pool heating feature. The option of connecting to the system using NIBE Uplink, which monitors and controls the heat pump, was also a crucial factor in the family's decision. NIBE Uplink with features such as "History" and "Change settings" has also been a great help when adjusting the system and during initial optimization of the facility. A skilled fitter made sure everything went smoothly. The ground source heat pump was installed in what used to be the house's laundry room, as the facility required less space and had to be close to the energy well.

"The option of connecting to the system using NIBE Uplink was also a crucial factor in the family's decision."

Results

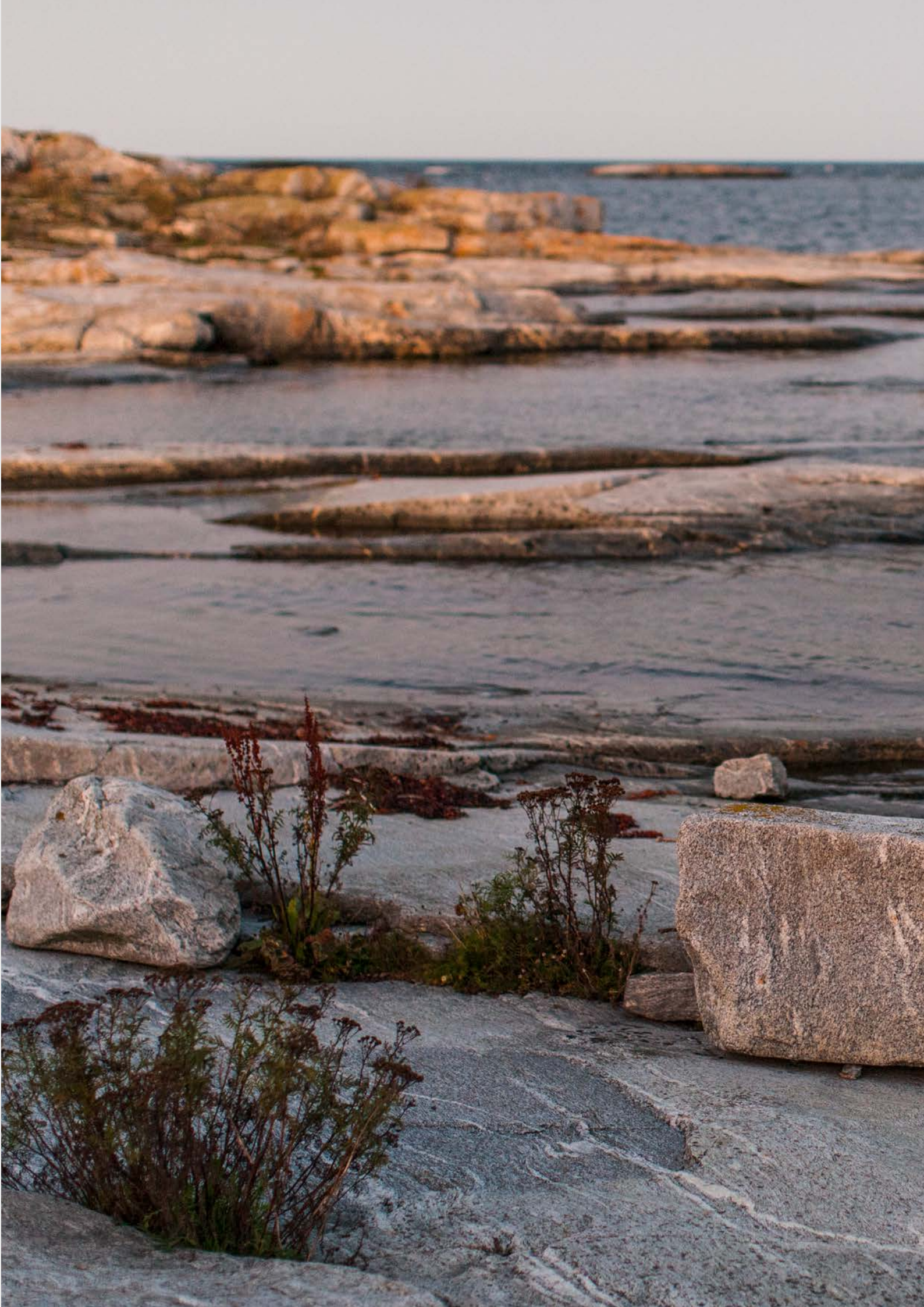
They have cut their heating costs by about 23,000 kronor in the past year.

Ground source heat pumps from NIBE
Sustainable climate solutions for your individual journey

Your next step?

Find your local NIBE office at www.nibe.eu. They'll help you locate your nearest NIBE installer and select the best kind of heat pump for your needs.





NIBE Energy Systems
BOX 14, 285 21 Markaryd, Sweden
Tel. +46 433-27 30 00
nibe.eu

This brochure is a publication from NIBE Energy Systems. All product illustrations, facts and specifications are based on current information at the time of the publication's approval. NIBE makes reservations for any factual or printing errors in this brochure.

©2020 NIBE ENERGY SYSTEMS
Photos by www.benfoto.se and NIBE.